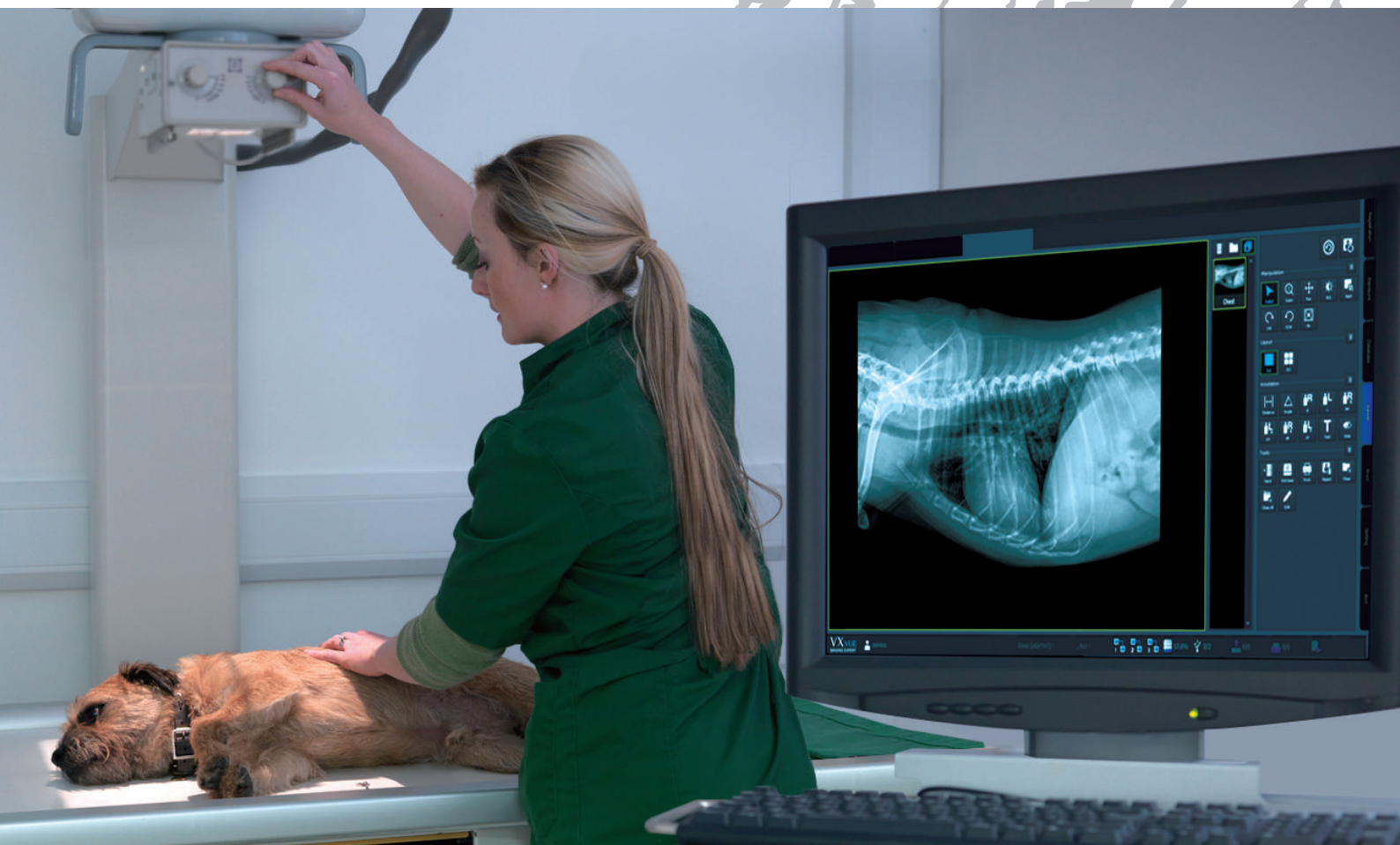




VIVIX-S 1717V

Wide and Slim Flat Panel Detector for Veterinary



Optimized
Veterinary solution
for retrofit and system



Easy installation
(cassette tray)



High image quality



Fast booting time

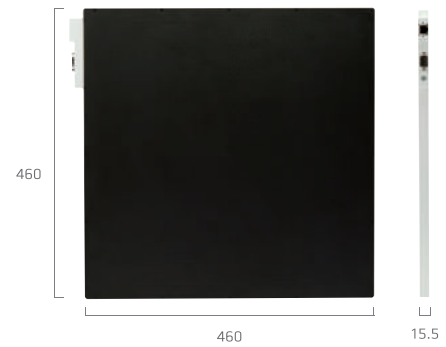


Efficient workflow

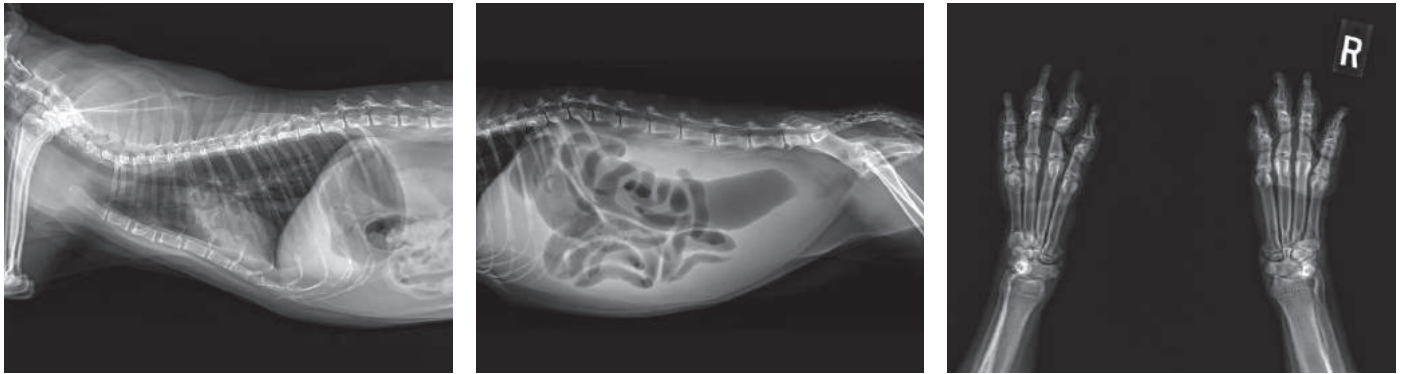
Features

- * 17"X17" fixed cassette size tethered panel
- * Stable and reliable AED (Automatic Exposure Detection)
- * Fast booting time: 15 seconds
- * Robust mechanical structure
- * 16 bit analog-to-digital conversion

Drawing



Clinical Images



* Standalone clinical images may have been cropped to better visualize pathology.

Technical Specifications

Model Name	FXRD-1717VA	FXRD-1717VB
Technology	a-Si TFT with PIN diode	
Scintillator	CsI:Tl	Gd ₂ O ₂ S:Tb
Pixel Pitch	140µm	
Spatial Resolution	3.5lp/mm	
Pixels	3072 x 3072 pixels	
Image Size	17" x 17" (43.0 cm x 43.0 cm)	
Grayscale	16 bit	
Image Acquisition Time	2 s	
Recommended Cycle Time	15 s	
Data Interface	Gigabit Ethernet	
X-ray Generator Interface	Line trigger: DR trigger Mode Auto trigger: AED Mode	
Dimensions (H x W x D)	46.0 cm x 46.0 cm x 1.5 cm	
Weight	4.5 kg	
X-ray Voltage Range	40 – 150 kVp	
Operating Environment	10°C to 35°C, 30 % to 85 % RH (non-condensing)	

* Specifications are subject to change without prior notification.

1 Chapin Road, Pine Brook, New Jersey 07058
 Tel: 800-456-7800 International: 201-298-2980 Fax: 888-437-9729
 Email: info@medlinkimaging.com

www.medlinkimaging.com