



Linking Technology
To the Imaging Professional

The Medlink Cassette Challenge!

“If a competitive cassette meets or exceeds any of the
4 key quality standards of the Medlink Cassette, we will
gladly refund your money.”

Have you chosen the right cassette?



Medlink
Cassette



The COMPETITION'S
Cassette

Does your cassette/screens pass these quality standards?

- Film/screen contact



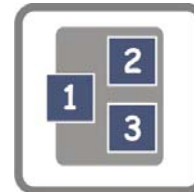
- Light tightness /Light leakage



- Durability



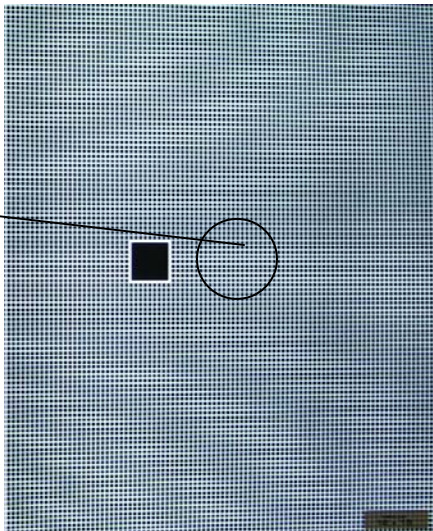
- Ease of use and aesthetics





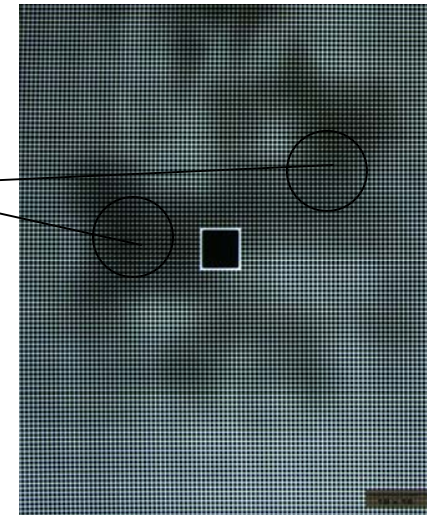
Film-screen contact

Good contact in
diagnostically
important area



Medlink
Cassette

Poor contact in
diagnostically
important area



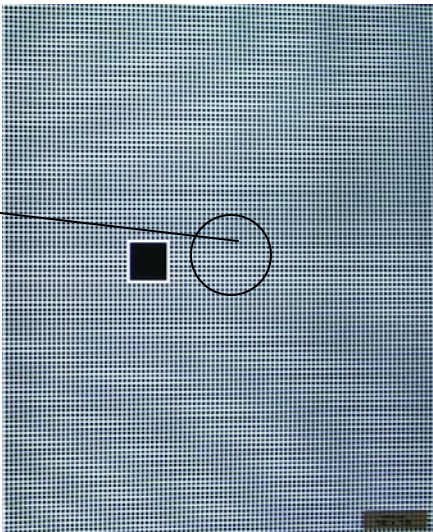
The COMPETITION'S
Cassette

- Uses aerospace grade aluminum with extreme hardness and spring action to return to original position after compression is removed
- Uses commodity grade soft aluminum which deforms permanently under compression



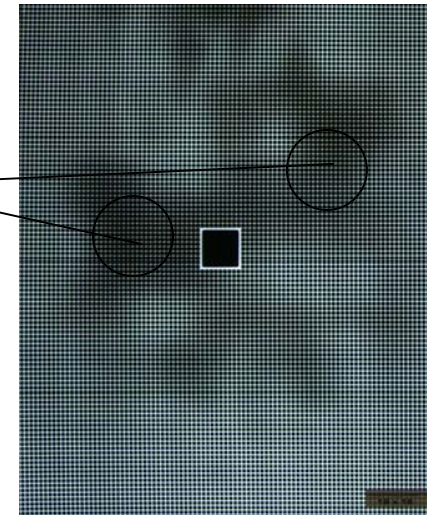
Film-screen contact

Good contact in
diagnostically
important area



Medlink
Cassette

Poor contact in
diagnostically
important area



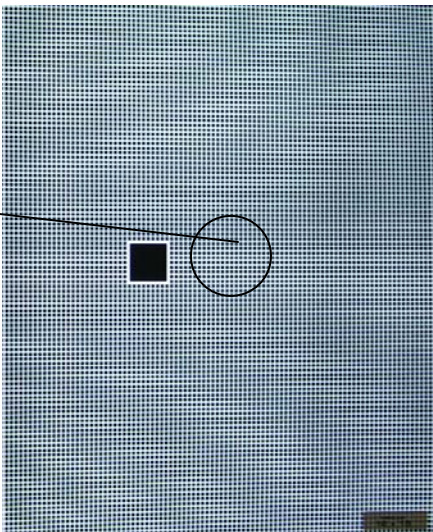
The COMPETITION'S
Cassette

- Uses 100% open cell foam system imploded with nitrogen gas
- Uses commodity foam system with partially blocked cells



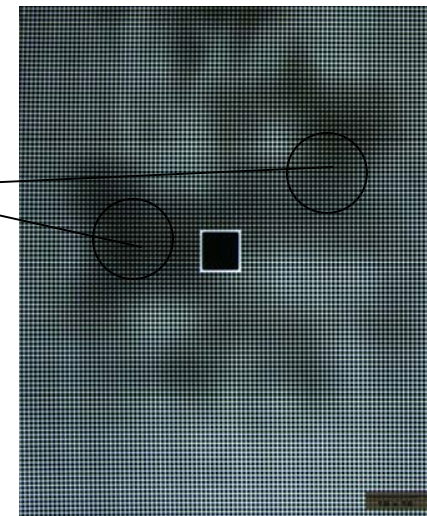
Film-screen contact

Good contact in
diagnostically
important area



Medlink
Cassette

Poor contact in
diagnostically
important area



The COMPETITION'S
Cassette

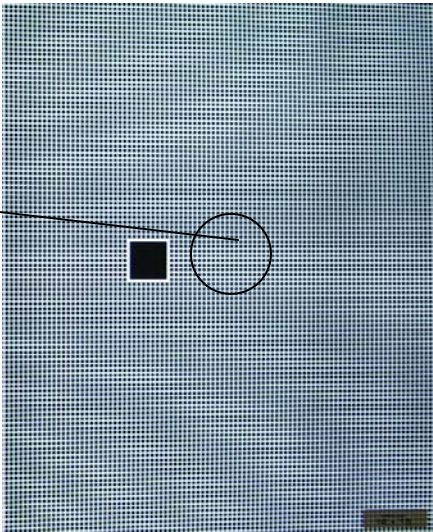
- Allows air to escape from cassette

- Trapped air stays inside cassette



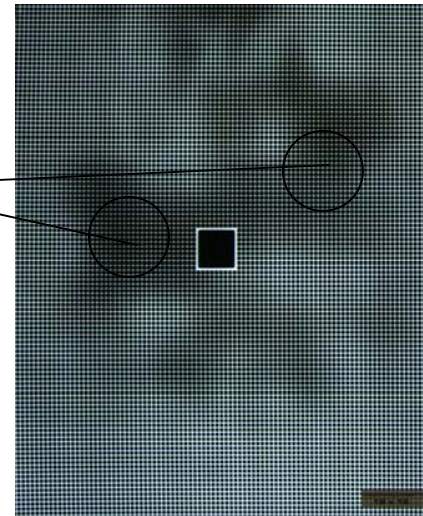
Film-screen contact

Good contact in
diagnostically
important area



Medlink
Cassette

Poor contact in
diagnostically
important area



The COMPETITION'S
Cassette

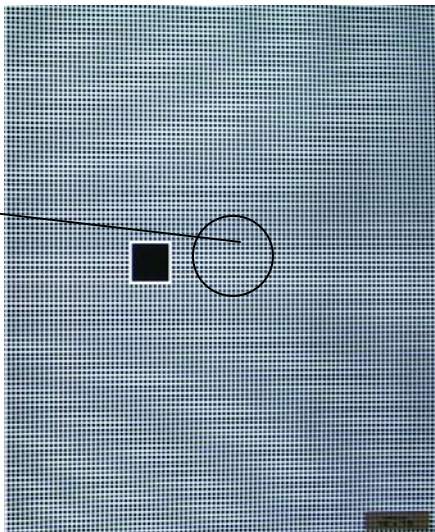
- Returns to original position after repeated compressions

- Partial area deforms permanently after repeated compressions



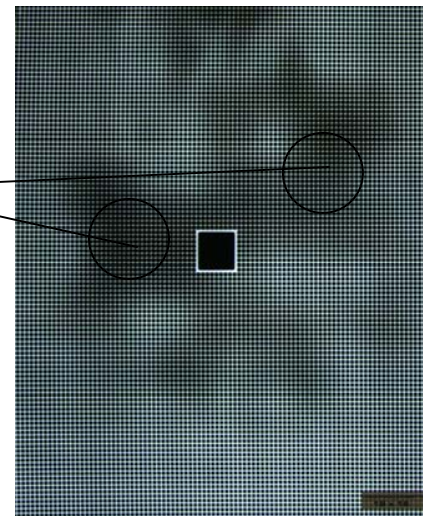
Film-screen contact

Good contact in
diagnostically
important area



Medlink
Cassette

Poor contact in
diagnostically
important area



The COMPETITION'S
Cassette

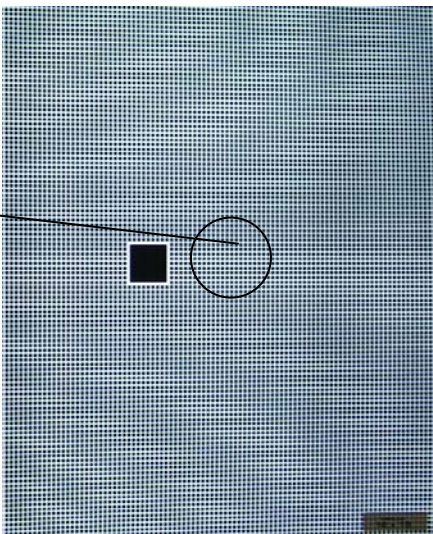
- Does not deteriorate over long period of usage

- Sags over time



Film-screen contact

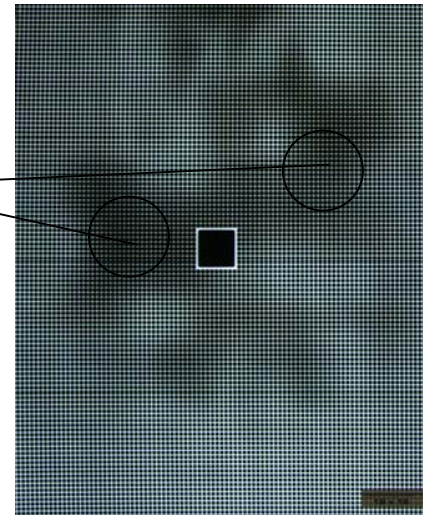
Good contact in
diagnostically
important area



Medlink
Cassette

- Meets and exceeds the specs of International Standards for film-screen contact as per ISO 4090

Poor contact in
diagnostically
important area



The COMPETITION'S
Cassette

- Does not meet the specs for film-screen contact as per ISO 4090



Light tightness / light leakage

Minor leakage
under 1/16 inch



Medlink
Cassette

Severe leakage
above 1/16 inch



The COMPETITION'S
Cassette

- Precision engineered under zero tolerance tooling

- Large variations in dimensions from piece to piece



Light tightness / light leakage

Minor leakage
under 1/16 inch



Medlink
Cassette

Severe leakage
above 1/16 inch



The COMPETITION'S
Cassette

- Highly tempered aluminum does not deform or crack

- Soft aluminum yields under pressure



Light tightness / light leakage



Medlink
Cassette

- ID window is light proof



The COMPETITION'S
Cassette

- ID window leaks light

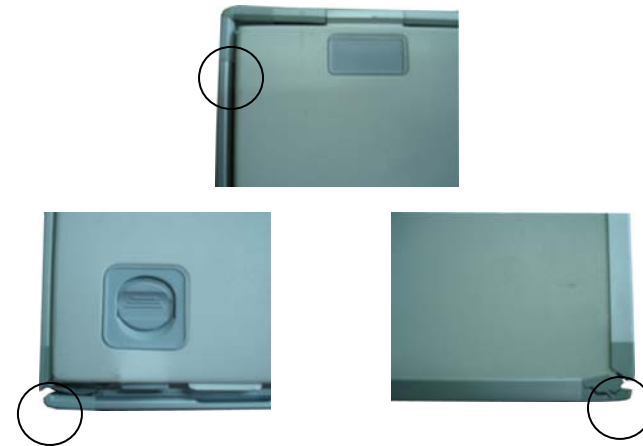


Durability



Medlink
Cassette

- Withstands successive drop on each corner or edge from 3 feet height on concrete floor (hospital standard)



The COMPETITION'S
Cassette

- Fails drop-test

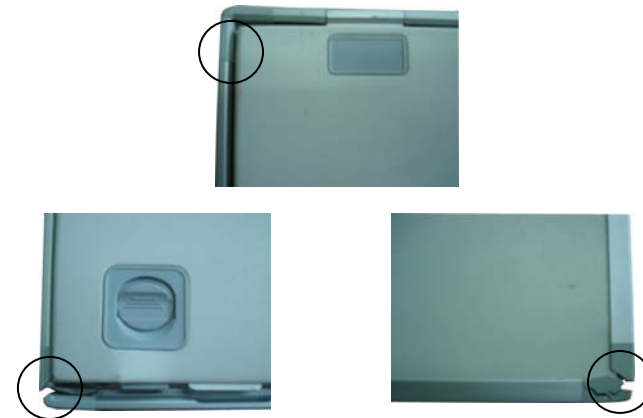


Durability



Medlink
Cassette

- Passes 10,000 opening and closing action of latches and hinges



The COMPETITION'S
Cassette

- Fails 10,000 opening /closing action with deformation or displacement of latches and/or hinges

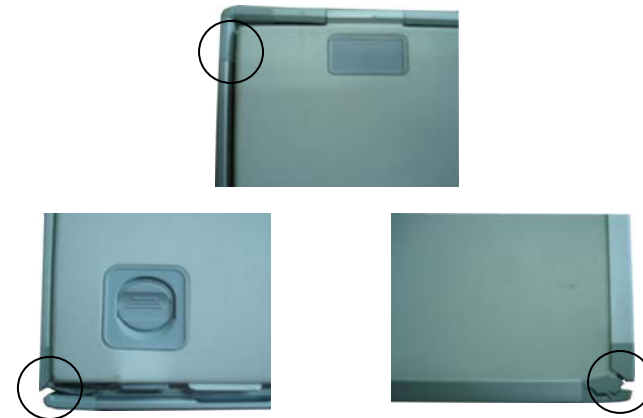


Durability



Medlink
Cassette

- Springs in inner tray stay intact for several years without losing spring action



The COMPETITION'S
Cassette

- Springs in inner tray deform as well as corrode over time



Ease of use & aesthetics

Medlink Cassette

- Coated with feel warm vinyl on tube side
- Dust free inner body as well as vinyl lamination on both sides of inner tray and cassette
- Non-shedding foam system
- No artifacts

The COMPETITION'S Cassette

- Painted on tube side (contrary to international standards) causing discomfort and 'cold contact' to patient
- Dust in painted inner surface may show as white spots on x-ray film
- Cassette foam sheds black particles over prolonged usage
- Random artifacts



Linking Technology
To the Imaging Professional

- Use Quality
- Use with Confidence
- Use Medlink Cassettes



*****Money back guarantee is provided upon inspection and testing of cassette/screen*****